

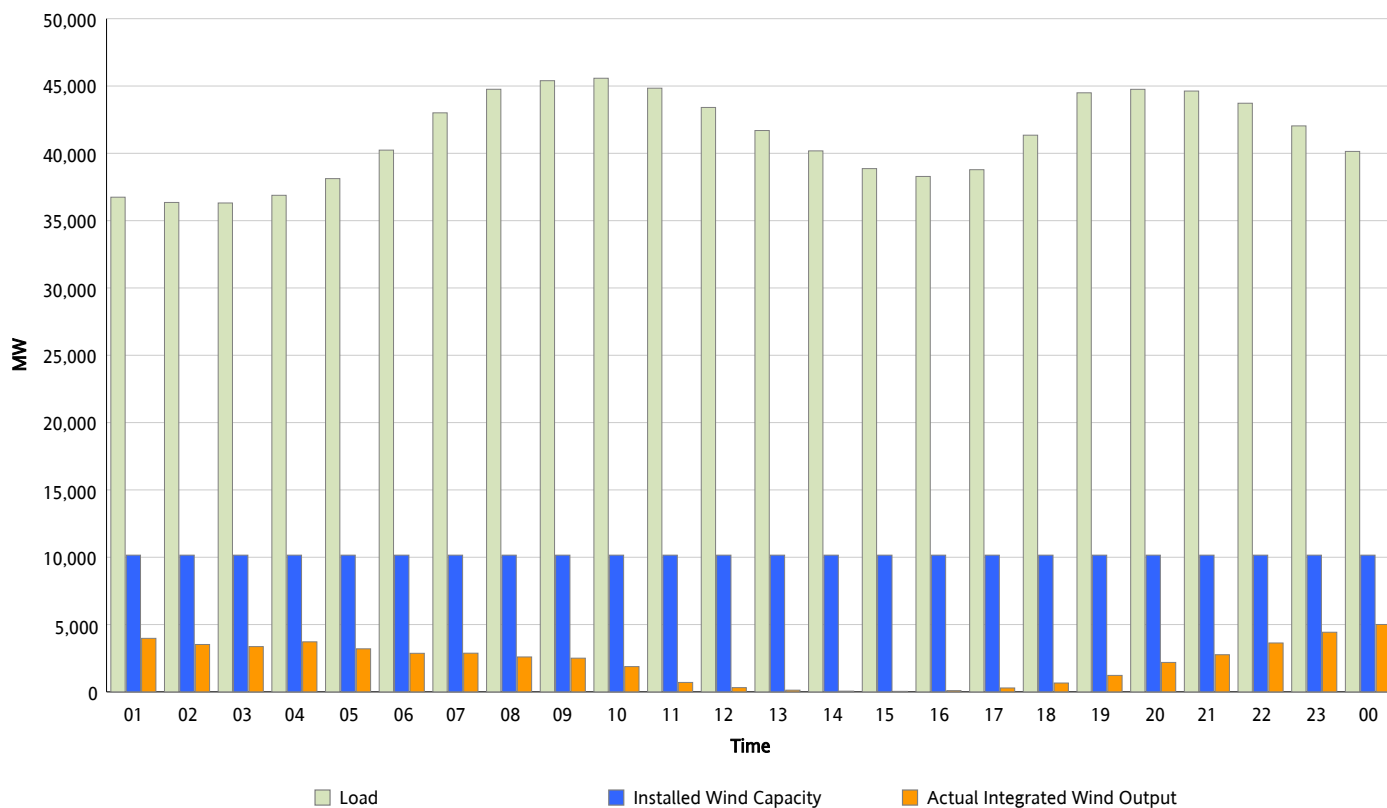


## ERCOT Grid Operations

### Wind Integration Report : 12/26/2012

Peak Load	45,575 MW
Load Peak Hour (HE)	10
Wind Over Peak	1,878 MW
Wind Record 12/25/12	8,638 MW
Max Wind Value*	5,375 MW
Wind Peak Time	00:00
Wind Integration %	13.68 %

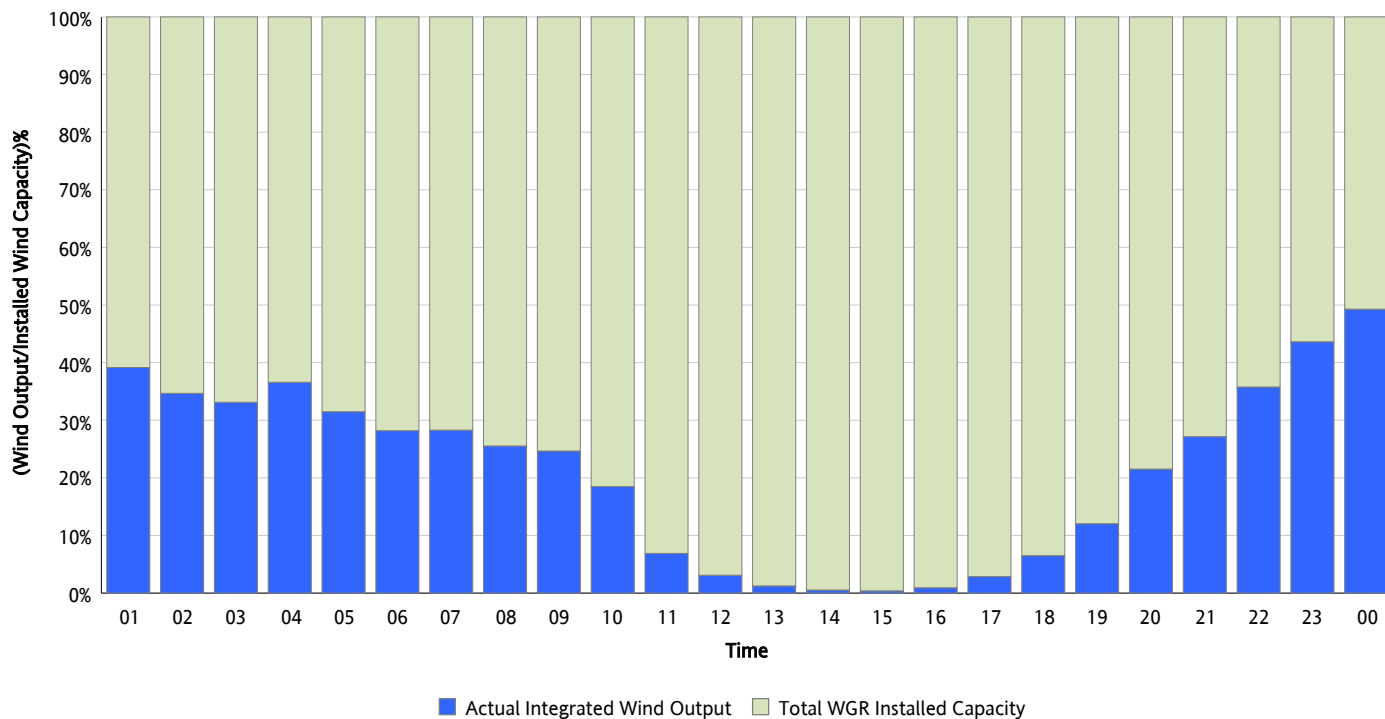
**Hourly Average Actual Load vs. Actual Wind Output**  
**12/26/2012**



\* Wind Record and Wind Max represent instantaneous values and the rest of the values are integrated over the hour

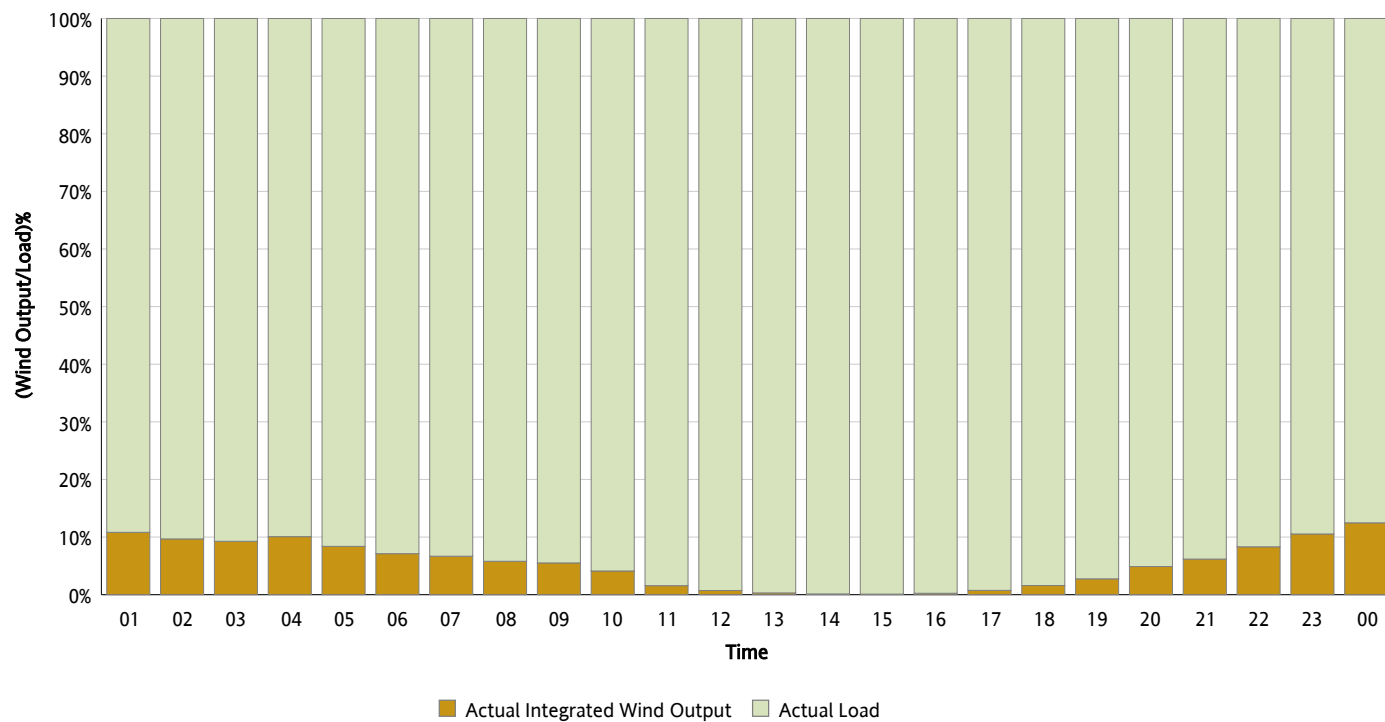
## Actual Wind Output as a Percentage of the Total Installed Wind Capacity

12/26/2012



## Actual Wind Output as a Percentage of the ERCOT Load

12/26/2012



## ERCOT Load vs. Actual Wind Output

12/19/2012 - 12/26/2012

